

CIMCO DNC-Max v6 User Guide

Contents

1	Introduction	1
1.1	What is new in DNC-Max v6	1
1.2	License information	3
2	Installing DNC-Max v6	7
3	DNC-Max server	11
3.1	Server menus	11
3.1.1	The setup menu	12
3.1.2	The help menu	12
3.2	Tray icon	13
4	DNC-Max administrator client	15
4.1	Client menus	16
4.1.1	Send/Receive	17
4.1.2	Port	18
4.1.3	Setup	19
4.1.4	Help	19
4.2	Transfer status	20
4.3	Send/Receive	22
4.3.1	Manual transmission	22
4.3.2	Directory selection	25
4.3.3	Mazak Send/Receive tab	27
4.3.4	LSV2 manual transmission	29
4.4	Port log	30
4.5	The terminal window	31
4.6	The Feed/Speed tab	32
4.7	System log	35
4.8	Debugging	36
4.9	Controlling multiple servers	36
4.9.1	LED indicators	37
4.9.2	Buttons	38

4.9.3	Adding servers manually	39
4.9.4	Disabling remote administration	39
5	DNC-Max HOWTO	41
5.1	Add a new port	41
5.2	Rename a port	43
5.3	Delete a port	43
5.4	Start and stop ports	44
5.4.1	Stopping a port	44
5.4.2	Starting a port	45
5.4.3	Restarting a port	45
5.5	Enable/disable a port	45
5.5.1	Enabling a port	46
5.6	Send a file	46
5.7	Send a file with advanced options	46
5.8	Receive a file	48
5.9	Pause a transmission	49
5.10	Restart a transmission	51
5.11	Stop a transmission	54
5.12	Specify feed data and non-printable characters	57
5.12.1	Specifying multiple lines	58
5.12.2	Specifying environment variables	59
5.12.3	ASCII Table	62
6	Access control	65
6.1	Access control in the server	65
6.2	Access control in the administrator client	66
6.3	Administrator access	68
6.4	User access	68
7	Serial communication overview	69
7.1	RS-232 / RS-422 / RS-485	69
7.1.1	RS-232	69
7.1.2	RS-422	69
7.1.3	RS-485	70
7.2	RS-232 layout for 9 pin connector	71
7.3	RS-232 layout for 25 pin connector	71
7.4	Standard RS-232 serial cable.	71
7.5	How to build a loopback device	72
7.5.1	Loopback device for a 9-pin connector	72
7.5.2	Loopback device for a 25-pin connector	72

8	Using on-line help	75
8.1	Using help in dialogs	75
8.2	Printing help information	76

List of Figures

2.1	DNC-Max v6 setup program	7
2.2	DNC-Max v6 server	8
3.1	DNC-Max server console	11
3.2	Windows taskbar tray	13
3.3	DNC-Max tray icon popup menu	13
3.4	DNC-Max animating tray icon	13
4.1	The DNC-Max administrator client	15
4.2	The DNC-Max Client icon	15
4.3	Port list	16
4.4	Transfer status	20
4.5	Manual transmission	22
4.6	Directory selection	25
4.7	Mazak manual transmission	27
4.8	Mazak Send/Receive tab in disk mode	28
4.9	Port log	30
4.10	Serial data terminal	31
4.11	Online adjustment of feedrate and spindle speed	32
4.12	System log	35
4.13	Transmission and protocol debugging	36
4.14	Select servers dialog	37
4.15	Add server manually	39
5.1	Select which server the new port should be added to	41
5.2	Add port	42
5.3	Rename port	43
5.4	Delete port	44
5.5	Stop port warning	44
5.6	Send file advanced dialog	47
5.7	Select line number	49
5.8	Select block number	49

5.9	Select tool number	50
5.10	Select line number using recent values	51
5.11	Select line number	52
5.12	Select block number	52
5.13	Select tool number	53
5.14	Select line number	53
5.15	Select line number	54
5.16	Select block number	54
5.17	Select tool number	55
5.18	Select line number	56
5.19	Send at end of feed	57
5.20	Alternate solution to end of feed problem	58
5.21	Send multiple line at end of feed	58
5.22	Result of sending feed data with linefeed	59
5.23	Result of sending feed data with no linefeed	59
5.24	Using environment variables in feed data	60
6.1	Logon dialog	65
8.1	Click the question mark	75
8.2	The question cursor	75
8.3	The popup information	75
8.4	Help buttons	76

List of Tables

5.1	ASCII Table: ASCII 0 to ASCII 32	62
5.2	ASCII Table: ASCII 33 to ASCII 127	63
7.1	9 pin RS-232	71
7.2	25 pin RS-232	71
7.3	Standard RS-232 serial cable	72

Introduction

Congratulations on your purchase of DNC-Max v6. DNC-Max v6 is the latest version in a long line of proven DNC solutions from CIMCO Integration.

1.1 What is new in DNC-Max v6

DNC-Max v6 includes a number of improvement over DNC-Max v5:

- **New user interface**

The new user interface in v6 follows the latest standards for windows user interface design.

- **Comprehensive on-line help**

Now everything you need to know about functions that was previously contained in the reference manuals is on-line and at your fingertips. Stumped on a function? ? icon, **F1**, or the **Help** button. It will take you right to the information you need.

- **Remote administration**

Monitor and control your DNC servers from anywhere, over a local network or Internet connection.

- **Flexible configuration**

Add, remove, configure or migrate ports from one server to another, while the server is running.

If you have a large number of identical CNC's, just configure once, and then distribute the configuration to all your DNC servers.

- **Advanced standard protocol**

The new standard protocol contains a number of new features, including multiple *auto receive* and *remote request* configurations, advanced backup feature, and a new innovative solution for trigger configuration.

- **Start/restart transmission**

Start or restart a transmission from a specific line number, block number or tool change. In addition, DNC-Max will keep track of tool

changes, and changes in feed rate and spindle speed, to ensure that when you start or restart a transmission, the correct tool and feed/speed is used.

- **Dynamic feed/speed adjustment**

On-line NC parameter adjustment while transmission is in progress. Allowing the operator to modify the feed and speed, without modifying the NC-program, eliminating a common stop/modify/restart cycle.

- **Improved log facility**

DNC-Max provides comprehensive logging of system activity, and the ability to send status reports directly to CNC operators.

- **Access control**

Several levels of password protection, limiting configuration and control options to key personnel.

1.2 License information

Information in this document is subject to change without notice and does not represent a commitment on the part of CIMCO Integration. The software described in this document may be used or copied only in accordance with the terms of the license. The purchaser may make one copy of the software for a backup, but no part of this user manual may be reproduced, stored in a retrieval system, or transmitted in any form or by any means electronic or mechanical, including photocopying and recording for any purpose other than the purchaser's personal use, without prior written permission from CIMCO Integration.

TERMS OF USE FOR SOFTWARE - CIMCO DNC-Max

Date: February 2012

Copyright 1991-2012 CIMCO Integration

Software: CIMCO DNC-Max 6.x

Notice:

CIMCO Integration reserves the right to make improvements to the CIMCO DNC-Max Software at any time and without notice.

Software License

You have the right to use the number of licenses of the enclosed program, which you have bought from CIMCO Integration. You may not distribute copies of the program or related documentation to any persons or companies. You may not modify or translate the program or related documentation without the prior written consent of CIMCO Integration.

Disclaimer of all Warranties and Liability

CIMCO Integration makes no warranties, either express or implied, with respect to the software, its quality, performance, merchantability, or fitness for any particular purpose. The entire risk as to its quality and performance is with the buyer. Should the CIMCO DNC-Max software prove defective following its purchase, the buyer (and not CIMCO Integration, its distributor, or its retailer) assumes the entire cost of all necessary servicing, repair, of correction and any incidental or consequential damages. In no event will CIMCO Integration be liable for direct, indirect, or consequential damages resulting from any defect in the software, even if CIMCO Integration has been advised of the possibility of such damages. Some jurisdictions do not allow the exclusion or limitation of implied warranties or liability for incidental or consequential damages, so the above limitation or exclusion may not apply to you.

NOTICE: The accompanying software is confidential and proprietary to CIMCO Integration. No use or disclosure is permitted other than as expressly set forth by written license with CIMCO Integration.

Copyright (c) 1991-2012 CIMCO Integration. All rights reserved.

THIS SOFTWARE CONTAINS CONFIDENTIAL INFORMATION AND TRADE SECRETS OF CIMCO INTEGRATION. USE, DISCLOSURE, OR REPRODUCTION IS PROHIBITED WITHOUT THE PRIOR EXPRESS WRITTEN PERMISSION OF CIMCO INTEGRATION.

DNC-Max, CIMCO Edit, and the CIMCO Logo are trademarks of CIMCO Integration.

Microsoft, Windows, Win32, Windows NT and are trademarks or registered trademarks of Microsoft Corporation.

Other brand and product names are trademarks or registered trademarks of their respective holders.

Installing DNC-Max v6

To install DNC-Max v6 follow the instructions below.

1. Locate installation files

If you received DNC-Max v6 on a CR-ROM open the DNC-Max v6 directory on the CD. If you received DNC-Max via e-mail, save the DNC-Max 6 file in a temporary directory.

2. Run installation program

Start the installation program by clicking on DNC-Max v6 setup program:



Figure 2.1: DNC-Max v6 setup program

3. Select components

Now follow the instructions on the screen. If this is your first installation, you should select the server installation.

If you have purchased a license for CIMCO Edit, or wish to install an evaluation version of CIMCO Edit, you should also select *CIMCO Edit* from the list.

4. Copying your keyfile

If you do not have a keyfile and wish to install an evaluation version, just proceed to the next step.

If you have received a keyfile, it should be copied to the `DNCMax6` directory after the installation is completed.

If you have installed both DNC-Max and CIMCO Edit, the keyfile must be copied to the `CIMCOEdit6` directory too.

5. Starting the server for the first time

When the installation is completed, and you have copied your keyfile, you are ready to start DNC-Max for the first time. Click on the DNC-Max server icon on you desktop, this will bring up the server console.



Figure 2.2: DNC-Max v6 server

When the server is started, verify that your company name is shown in the **Licensed to** field on the server console, if not, you forgot to copy the keyfile to the DNC-Max directory.

Note: If you are running an evaluation version, the license name is *Demo version*.

6. Server setup

To configure the server, select **Setup/Configure Server** from the server console menu.

On the **Server configuration** tab, enter a name for this server. Choose a name that describes the function and/or location of this server, ex. **Shop Floor West**.

On the **Directories** tab, select the root directory for this server. The root directory is the base directory for all log files, NC programs etc. If you have all your NC programs on a single disk or network drive, choose this drive as the root directory. If you have NC programs on multiple drives just choose one of the drives for now.

Check the **Auto create directories** at the bottom of the dialog.

Close the configuration by clicking **OK**.

For further information about server configuring, please refer to the *Installation Guide*.

7. Starting the administrator client

The next step is to configure the server to communicate with your CNC's. This is done from the administrator client. To start the administrator client, click on the **Client** button on the server console.

For further information about the administration client, please refer to section 4.

8. Setting up the first machine

If this is your first installation, two ports *Machine A* and *Machine B* will be listed in the administrator port list. These are the default configurations installed by DNC-Max.

If want to configure a machine that uses the standard protocol, you can rename the first port. You should choose a name that uniquely

identifies the CNC, e.g. the location of the CNC or the name of the operator.

To rename a port, select **Port/Rename Port** from the menu.

If you want to configure a machine that requires a special protocol like *Heidenhain* or *Mazak*, delete the two ports shown in the list. To delete a port, select **Port/Delete Port** from the menu. Then add a new port by selecting **Port/Add Port**. For further information on how to add new ports, please refer to section 5.1.

You are now ready to configure the machine.

Note: If your license only allows one port only, a single machine is shown.

9. Opening the configuration dialog

To configure a port, select the port in the port list by clicking the left mouse button. Then select **Port/Configure Port** from the menu. This will open the configuration dialog.

10. Basic port settings

For now, just select the correct serial port settings for this machine.

When you are done, press **OK** at the bottom of the dialog.

For further information on protocol configuration, please refer to the *Installation Guide*.

11. Testing the configuration

You are now ready to start transferring data between the DNC server and the CNC.

Depending on the type of protocol selected, you can either send a file to the CNC from the administrator program using the **Send/Receive** menu, or request a program from the CNC.

Many CNC's requires special settings to function correctly. If you are unable to send and/or receive data, it is probably because additional configuration is needed. For further information on protocol configuration, please refer to the *Installation Guide*.

DNC-Max server

DNC-Max v6 consists of two programs, the server (shown below) and the administrator client. The server program handles communication with the CNC's, and must be running at all times. It is recommended that you start the server from the *Startup folder*.

If you start the server minimized, you can bring up the server console from the tray icon (see section 3.4).

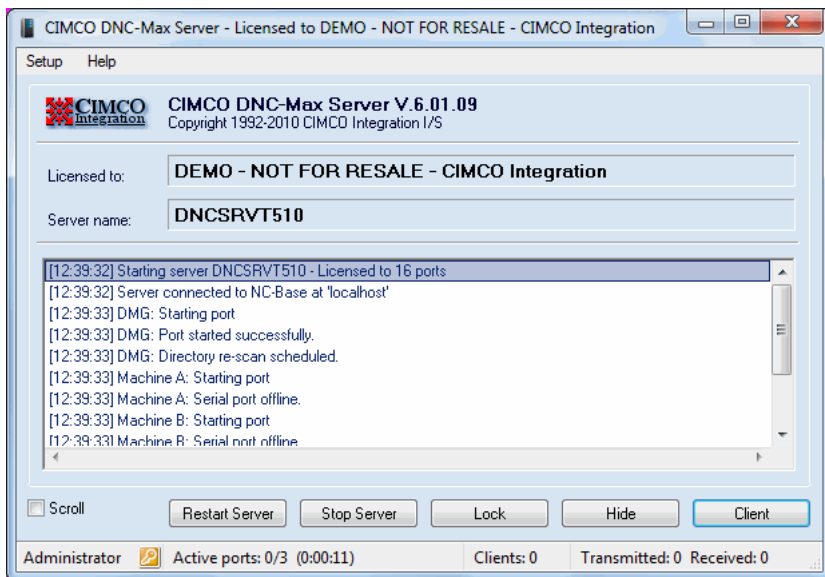


Figure 3.1: DNC-Max server console

The top of the server window shows the program version, the server name, and license name. Just below is the server log window. The server log window contains information about server activities.

3.1 Server menus

This section describes the server menus.

3.1.1 The setup menu

- **Clear Log**

Clear the contents of the log window. If you clear the log, you can still find old log information in the server log file.

- **Log Show Time**

Select this item to display the time of the logged event. This function can be toggled on and off, the time is always stored in the log.

- **Log Show Date**

Select this item to display the date of the logged event. This function can be toggled on and off, the date is always stored in the log.

- **Log Shows Errors Only**

Only errors are displayed in the log. This function can be toggled on and off.

- **Configure Server**

Click this option to open the server configuration dialog. In this dialog, you can configure the server settings and select a language for the menus.

- **Backup Configuration**

Use this item to backup the server configuration.

- **Restore Configuration**

Use this option to restore the server configuration from a backup.

3.1.2 The help menu

- **Contents**

Open the on-line help.

- **Visit CIMCO's Homepage**

Go to CIMCO Integration homepage if your computer is connected to the Internet.

- **About DNC-Max**


Show version/license information.

3.2 Tray icon

When the DNC-Max server is running a small icon is shown in the taskbar program tray.



Figure 3.2: Windows taskbar tray

You can always open the server console by clicking the right mouse button on the DNC-Max tray icon , this will activate the tray menu. If the server console is hidden (minimized), select **Show** from the menu. If the server console is locked, you can unlock it and vice versa. To start the administrator client, select **Client**.

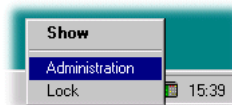


Figure 3.3: DNC-Max tray icon popup menu

If the server has one or more transmissions in progress, this is indicated by the tray icon running a small animation, where the lights on the CNC control are flashing.



Figure 3.4: DNC-Max animating tray icon

DNC-Max administrator client

The administrator client is the primary interface to DNC-Max for monitoring server activities, manually controlling transmissions and configuring ports. The administrator client is shown below.

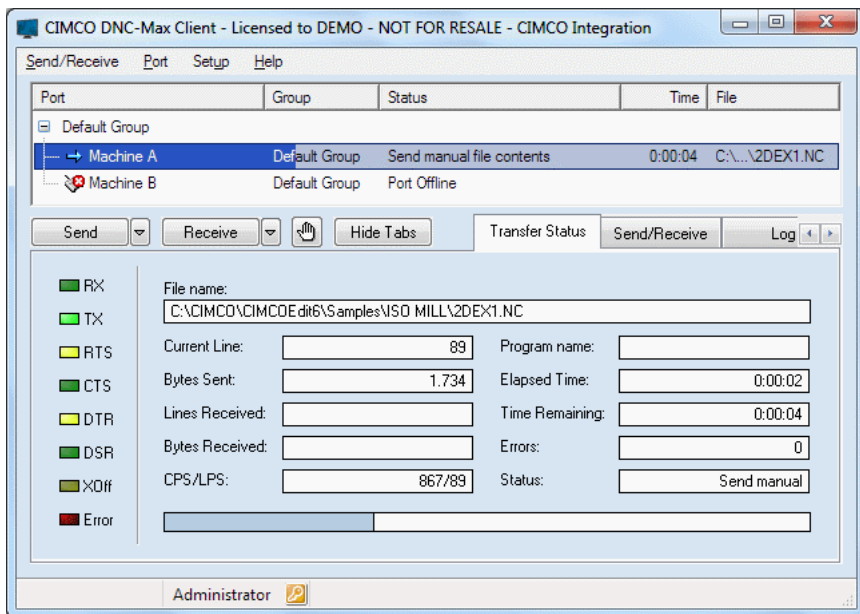


Figure 4.1: The DNC-Max administrator client

To start the administrator client, click on the **Client** button on the server console, or use the *DNC-Max Client* icon on the desktop.



Figure 4.2: The DNC-Max Client icon

The Client program consists of three parts: menus, port list and tab sheets.

- **Client menus**

The menus are used to access all common DNC-Max functions. For a detailed description of the menus, please refer to section 4.1.

- **Port list**

The port list contains a list of all ports that can be controlled by the administrator client. To configure or control a specific port, select the port from the port list, by left-clicking on the port, this will highlight the selected port.

Port	Group	Status	Time	File
Default Group				
Machine A	Default Group	Send manual file contents	0:00:04	C:\...\2DEX1.NC
Machine B	Default Group	Port Offline		

Figure 4.3: Port list

The port list shows the port description, current status, remaining time when transmitting or elapsed time when receiving, and the name of the file being transmitted (without path).

- **Tab sheets**

The tab sheets are used for monitoring and controlling the selected port. The tabs are described in detail in the following sections.

If your DNC-Max servers are licensed for remote administration, you can control multiple servers from the same client. For further information, please refer to section 4.14.

If you have enabled access control, you should read the section on access control (section 6).

Note: You can resize the dialog by dragging on the border, or pressing the maximize button in the upper right corner.

4.1 Client menus

This section describes the Client menus.

Note: All menus related to a specific port (like **Send/Receive** and **Configure/Rename/...**) are also available in the port popup menu. To activate the port popup menu, click the right mouse button on a port in the port list.

4.1.1 Send/Receive

The **Send/Receive** menu is used for manual file transmission.

- **Send File**

Send file manually. For further information, please refer to section 5.6.

- **Send File Advanced**

Send file with advanced options. For further information, please refer to section 5.7.

- **Send Recent Files**

Quick access to a list of files recently sent to the selected port.

If a file was previously sent with advanced options, choosing that file from the recent menu will send it with the same options.

For further information, please refer to section 5.6 and section 5.7.

- **Receive File**

Receive file. For further information, please refer to section 5.8.

- **Receive Recent File**

Quick access to a list of files recently received on the selected port.

For further information, please refer to section 5.8.

- **Pause Transmission**

Pause current transmission.

For further information, please refer to section 5.9.

- **Restart Transmission**

Restart current transmission.

For further information, please refer to section 5.10.

- **Stop Transmission**

Stop current transmission.

For further information, please refer to section 5.11.

- **Clear queue**

Clear file request queue for the selected machine. For further information, please refer to section 4.3.

- **Print File**

Print a file. Select a file and print it directly.

- **View last file transferred**

View/Edit the last file transferred.

4.1.2 Port

The **Port** menu is used for controlling the ports. To control a specific port, click on the port name with the left mouse button in the port list, this will highlight the selected port.

- **Stop**

Stop port. For further information, please refer to section 5.4.

- **Start**

Start port. For further information, please refer to section 5.4.

- **Restart**

Restart port. For further information, please refer to section 5.4.

- **Enable**

Enable port. For further information, please refer to section 5.5.

- **Disable**

Disable port. For further information, please refer to section 5.5.

- **Configure**

Configure selected port. For further information, please refer to the *Installation Guide*.

- **Add**

Add new port. For further information, please refer to section 5.1.

- **Delete**

Delete port. For further information, please refer to section 5.3.

- **Rename**

Rename port. For further information, please refer to section 5.2.

- **Handheld Terminals**

Use this option to monitor handheld terminals.

- **Machine Monitors**

Select this item to add and configure machine monitor ports.

4.1.3 Setup

The **setup** menu is used for configuring the administrator client.

- **Log On/Log Off**

Use this option to log on or log off the DNC-Max Client. Please refer to section 6 for more information.

- **Configure Client**

Click this option to open the Client configuration dialog. In this dialog, you can configure the DNC-Max Client settings and select a language for menus. **Note:** Log entries are stored using the language selected on the server.

- **Select Servers**

Select server to control. For further information on selecting servers, please refer to section 4.14.

- **Restart Server**

Use this option to restart the server when the configuration has changed or a problem is detected.

- **Configure Server**

Click on this item to open the server configuration dialog. Here you can configure the server settings and select a language for menus.

- **Backup Server Configuration**

Click this option to backup the server settings.

- **Restore Server Configuration**

Use this option to restore the server configuration.

4.1.4 Help

- **Contents**

Display the on-line help.

- **About DNC-Max**

Show version/license information.

4.2 Transfer status

To see detailed information about the current transfer for a specific port, click on the port in the port list, and select the **Transfer status** tab. The transfer status tab is shown below.

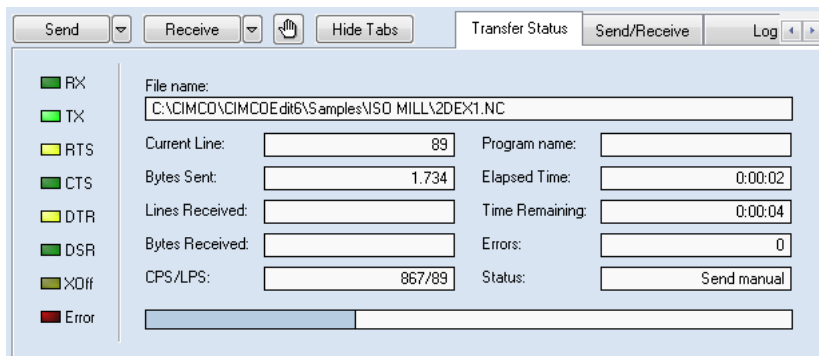


Figure 4.4: Transfer status

On the left side of the tab are a number of lights, indicating the current status of the serial port.

- **RX** Receive signal - server is receiving data from the CNC.
- **TX** Transmit signal - server is sending data to the CNC.
- **RTS** Ready To Send - status from server to DNC.
- **CTS** Clear To Send - status from CNC to server.
- **DTR** Data Terminal Ready - status from server to DNC.
- **DSR** Data Set Ready - status from DNC to server.
- **XOff** Transmission paused by XOff from CNC.
- **Error** One or more errors occurred during current transfer.

The right hand side of the transfer status tabs contains information about the current transfer.

- **File name**

When the DNC is transferring a regular file to the CNC, this field contains the name of the file being transferred with full path.

During an auto receive operation, this field contains the file name of the received program, if auto receive is enabled, and a valid program name is found in the incoming data. In some cases, depending on the port configuration, partial or full path information is included. During manual receive, the filename with full path is shown.

If the DNC is transferring a directory list, receive report etc. this is indicated with a short description of the type of data being transferred. Ex.: If the server is receiving a directory list request, this field will display `List request`.

- **Current line**

Current line number. This number does not include lines sent before the start of the file, i.e. feed data specified in the port configuration.

- **Bytes sent**

The number of bytes transmitted.

- **Lines Received**

The number of lines received.

- **Bytes Received**

The number of bytes received.

- **CPS/LPS**

The overall transfer rate in *Characters Per Second* (CPS), and *Lines Per Second* (LPS).

- **Program name**

Program name found during an auto receive or remote request operation.

- **Elapsed Time**

Elapsed time since start of transfer.

- **Time Remaining**

An estimate of the remaining time during a transmit operation.

- **Errors**

Number of errors registered for this transfer.

- **Status**

Current port status (*Idle / Send manual / ...*).

When the DNC is transferring a file to the CNC, a progress bar is shown in the bottom of the tab, indicating the progress of the current transfer.

4.3 Send/Receive

The contents of the Send/Receive tab depends on the protocol used by the selected port.

The **Manual transmission** dialog is used by ports that supports transfers, where the program can be selected from the DNC server (ex. the standard protocol). The **Directory selection** dialog is used by port that supports only remote requested operations (ex. Heidenhain protocol).

4.3.1 Manual transmission

You can use the **Send/Receive** tab to send or receive files manually. A manual operation is a file transfer between the DNC server and the CNC, initiated manually from the administrator program, as opposed to an automatic transfer initiated by the CNC operator using the remote request or auto receive features.

Manual transmissions require user access.

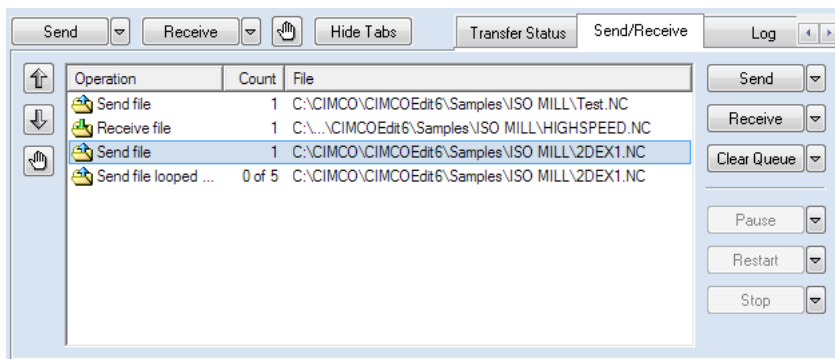


Figure 4.5: Manual transmission

- **Send**

To send a file manually from a specific port, highlight the port in the port list by clicking on the left mouse button, and press **Send**.

Then select a file to send from the file dialog. If you are controlling a remote server, the drives and files listed in the file dialog are those visible to the server. I.e. you cannot send files located on the administration computer, unless the administration computer has one or more shared drives, that are accessible from the server. The reason for this is, that a file must be visible from the server, for the server to be able to transmit it.

Press the arrow next to the **Send** button, to show a list of files recently sent to the selected port.

If a file was previously sent with advanced options, choosing that file from the recent list will send it with the same options.

For further information, please refer to section 5.7.

Note: To send more than one file, select multiple files from the *File Send* dialog, using *CTRL/SHIFT + Mouse click*.

- **Receive**

To receive a file manually from a specific port, highlight the port in the port list by clicking on the left mouse button, and press **Receive**.

Then select a name for the file that should be received in the file dialog.

If you are controlling a remote server, the drives and files listed in the file dialog are those visible to the server. I.e. you cannot send files located on the administration computer, unless the administration computer has one or more shared drives, that are accessible from the server. The reason for this is, that a file must be visible from the server, for the server to be able to transmit it.

For further information, please refer to section 5.8.

- **Clear Queue**

To remove a specific entry in the *Transmission queue*, highlight the entry, and press **Clear Queue**.

To remove all entries, press the arrow next to the **Clear Queue** button, and select **Clear All Requests** from the popup menu.

- **Pause**

To pause a transmission on a specific port, highlight the port in the port list by clicking the left mouse button, and press **Pause**. This will pause the transmission immediately.

To access the advanced pause functions, press the arrow next to the **Pause** button.

For further information about the advanced pause functions, please refer to section 5.9.

- **Restart**

To restart a transmission on a specific port, highlight the port in the port list by clicking the left mouse button, and press **Restart**. This will restart the transmission from the point where it was paused.

To access the advanced restart functions, press the arrow next to the **Pause** button.

For further information about the advanced restart functions, please refer to section 5.10.

- **Stop**

To stop a transmission at a specific port, highlight the port in the port list by clicking the left mouse button, and press **Stop**. This will stop the transmission immediately.

To access the advanced stop functions, press the arrow next to the **Stop** button.

For further information about the advanced stop functions, please refer to section 5.11.

Note: Pause, restart and stop are only supported in the standard protocol.

Transmission queue

If you select **Send** or **Receive**, and a transmission is currently in progress on the selected port, your request will be queued. Queue transfers are shown in the list box on the left hand side of the transmission control buttons.

The transmission queue has three columns:

The first column *Operation* indicates the type of transfer, e.g. *Send From Block Number*, *Receive File* or *Send file multiple times* (in a loop operation). The second column *Count* shows the number of times the file should be transferred.

If you have requested a looped transmission (only in the standard protocol), this column also contains information about how many times the file should be sent, and the current transfer number. I.e. if you have requested to send a file 5 times, and the server is currently sending the third iteration, the count column will show: *3 of 5*.

The third column *File* lists the names of the files to be transferred.

For further information about looped transfers, please refer to section 5.7.

Note: You can queue a maximum of 32 transfers.

4.3.2 Directory selection

If the selected port only supports transfers using remote request and auto receive (ex. Heidenhain), then the **Send/Receive** tab can be used to specify the directory that should be used when sending and/or receiving files.

To enable manual selection of directories, you must select *Manual* or *Both* in the *Transmit directory* and/or *Receive directory* settings in the port configuration. For further information, please refer to the *Installation Guide*.

Directory selection requires user access.

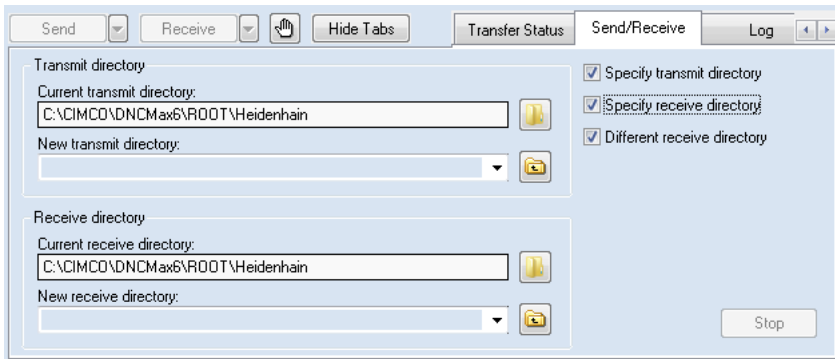


Figure 4.6: Directory selection

- **Specify transmit directory**

When this field is checked, the server will send files from the directory indicated in *Transmit directory/Current transmit directory* field.

- **Specify receive directory**

When this field is checked, the server will receive files to the directory indicated in *Receive directory/Current receive directory* field.

- **Different receive directory**


Check this field to manually specify a receive directory that is different from the transmit directory.

- **Transmit directory**

- **Current transmit directory**

This field indicates the current transmit directory.


If this field is disabled (text is gray), the transmit directory specified in the port configuration is used.

To change the current directory, press the folder button to the left , or enter a directory name in the *New transmit directory* field (see below).

- **New transmit directory**

Use this field to manually enter a new transmit directory.

A list of previously selected directories is available from the drop down list.

When you have entered a valid directory, or selected a directory from the drop down list, you must press the directory apply button to the right .


Note: If you enter an invalid directory, the server will not be able to send any files.

- **Receive directory**

- **Current receive directory**

This field indicates the current receive directory.


If this field is disabled (text is gray), the receive directory specified in the port configuration is used.

To change the current directory, press the folder button to the left , or enter a directory name in the *New receive directory* field (see below).

- **New receive directory**

Use this field to manually enter a new receive directory.

A list of previously selected directories is available from the drop down list.

When you have entered a valid directory, or selected a directory from the drop down list, you must press the directory apply button to the right .

Note: If you enter an invalid directory, the server will not be able to receive any files.

4.3.3 Mazak Send/Receive tab

The Mazak protocol uses a special dialog that allows the operator to control both Mazatrol and ISO transfers. The Mazak Send/Receive dialog is shown below.

Note: Manual operations require user access.

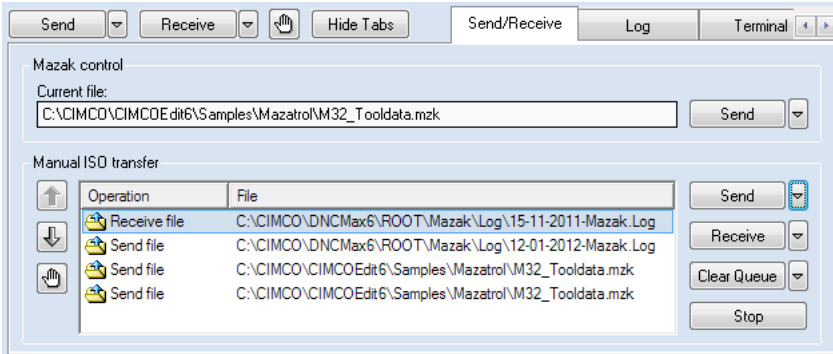


Figure 4.7: Mazak manual transmission

4.3.3.1 Mazatrol transfers

The contents of the upper half of the Mazak dialog depends on the configuration of the selected Mazak port.

- **Manual or Remote Request mode**

If the port is configured for *Manual* or *Remote Request* operations, the operator can select the next file to transfer by pressing **Send**.

If you are controlling a remote server, the drives and files listed in the file dialog are those visible to the server. I.e. you cannot select files located on the administration computer, unless the administration computer has one or more shared drives, that are accessible from the server. The reason for this is, that a file must be visible from the server.

Note: Press the arrow next to the **Send** button to show a list of recently selected files.

Note: If the operator changes the current file from the CNC using *remote request*, the *current file* field is updated.

- **Disk mode**

If the port is configured for *Disk* mode operations, the operator can change the current *disk directory* by pressing **Select Disk**.

If you are controlling a remote server, the directories listed in the directory dialog are those visible to the server. I.e. you cannot select directories located on the administration computer, unless the administration computer has one or more shared drives, that are accessible from the server. The reason for this is, that a directory must be visible from the server.

Note: Press the arrow next to the **Select Disk** button to show a list of recently selected disk directories.

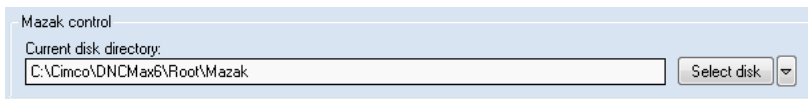


Figure 4.8: Mazak Send/Receive tab in disk mode

For further information please refer to the *Installation Guide*.

4.3.3.2 ISO transfers

The lower half of the Mazak manual transmission dialog is used to control ISO transfers. The layout is similar to the standard protocol manual transmission dialog.

- **Send**

To send a file manually from a specific port, highlight the port in the port list by clicking on the left mouse button, and press **Send**.

Then select a file to send from the file dialog. If you are controlling a remote server, the drives and files listed in the file dialog are those visible to the server. I.e. you cannot send files located on the administration computer, unless the administration computer has one or more shared drives, that are accessible from the server. The reason for this is, that a file must be visible from the server, for the server to be able to transmit it.

Press the arrow next to the **Send** button, to show a list of files recently sent to the selected port.

- **Receive**

To receive a file manually from a specific port, highlight the port in the port list by clicking on the left mouse button, and press **Receive**.

Then select a name for the file that should be received in the file dialog.

If you are controlling a remote server, the drives and files listed in the file dialog are those visible to the server. I.e. you cannot send files located on the administration computer, unless the administration computer has one or more shared drives, that are accessible from the server. The reason for this is, that a file must be visible from the server, for the server to be able to transmit it.

- **Clear Queue**

To remove a specific entry in the *Transmission queue*, highlight the entry, and press **Clear Queue**.

To remove all entries, press the arrow next to the **Clear Queue** button, and select **Clear All Requests** from the popup menu.

- **Stop**

To stop a transmission at a specific port, highlight the port in the port list by clicking the left mouse button, and press **Stop**. This will stop the transmission immediately.

Transmission queue

If you select **Send** or **Receive**, and a transmission is currently in progress on the selected port, your request will be queued. Queue transfers are shown in the list box on the left hand side of the transmission control buttons.

The transmission queue has two columns:

The first column *Operation* indicates the type of transfer, e.g. *Send* or *Receive*. The second column *File* lists the names of the files to be transferred.

Note: You can queue a maximum of 32 transfers.

4.3.4 LSV2 manual transmission

The only function available on the Send/Receive tab used for all LSV2 based protocols (Deckel/Agie/Heidenhain/...) is the *Stop* button. Pressing the *Stop* button stops the current transfer.

All other operations are only available from the control.

4.4 Port log

To see log information for a specific port, click on the port in the port list, and select the **Log** tab.

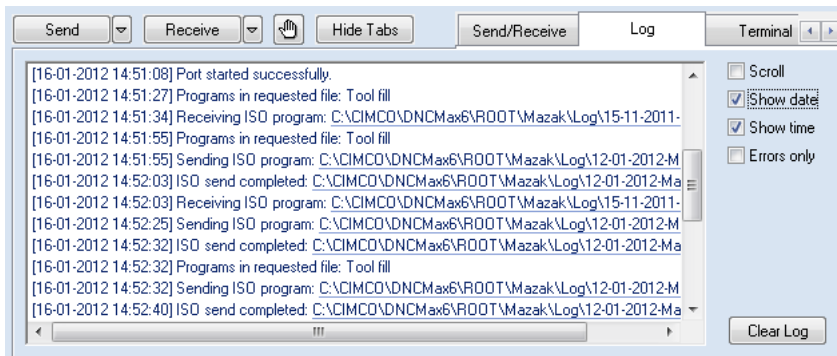


Figure 4.9: Port log

The port log contains log information for the selected port. If there are more than 1000 log entries since the server was started, only the last 1000 are shown. To see older log entries, you have to look in the log file.

There are two kinds of log entries: *Errors* and *Information*.

Error entries are logged after a failed operation, and are indicated with red text in the log. Information entries are logged after the completion of a successful operation, and are indicated with blue text. You can change these colors from **Setup / Log Colors** in the menu.

- **Scroll**

The log will scroll so new entries are shown at the bottom of the list. Check this field if you want to see the latest log entries.

- **Show date**

The log displays the date of the logged event. This function can be toggled on and off. The date is always stored in the log.

- **Show time**

The log displays the time of the logged event. This function can be toggled on and off. The time is always stored in the log.

- **Errors only**

Only errors are displayed in the log. This function can be toggled on and off. Both error and information entries are always stored in the log.

- **Clear log**

Clear the contents of the log. You can restart the administration client to bring back cleared log information, or check the log file.

4.5 The terminal window

To see the data being transferred for a specific port, click on the port in the port list, and select the **Terminal** tab. The terminal window is shown below.

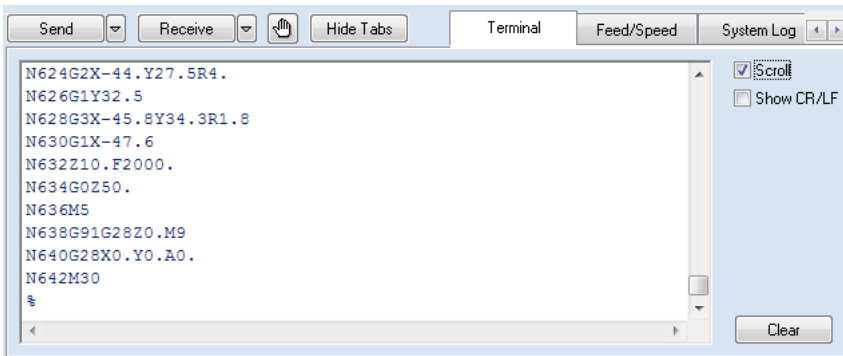


Figure 4.10: Serial data terminal

By default, any incoming data is green, and any outgoing data is blue.

- **Scroll**

When this field is checked, the terminal window scrolls when new data is added.

- **Show CR/LF**

Check this field to see linefeed characters (ASCII 10 and ASCII 13).

Note: The display is updated at a regular interval (500 ms), and not immediately after data is received/transmitted.

4.6 The Feed/Speed tab

To change the feedrate and/or spindle speed for a specific port, click on the port in the port list, and select the **Feed/Speed** tab. The feed/speed tab is shown below. You must have user access rights to change feed and/or speed parameters. If you are not logged on, you will be prompted for the user password (if required).

The following section describes how to adjust the feedrate. The method for adjusting the spindle speed is identical to this.

Note: All controls on this tab are disabled if the server is not licensed for feed/speed adjustment.

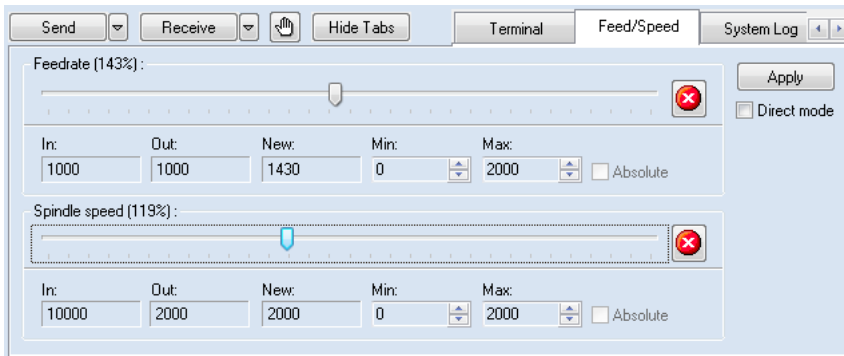


Figure 4.11: Online adjustment of feedrate and spindle speed

The feedrate is adjusted using the controls inside the *Feedrate* frame, in the upper half of the dialog.

The feedrate controls are: A slider, three feedrate indicators (*In*, *Out* and *New*), two fields to specify the minimum and maximum feedrates (*Min* and *Max*), a checkbox to select absolute adjustment, and an emergency button (red circle with white cross).

In addition to these controls, the **Apply** button, and the **Direct Mode** checkbox are shared between the feedrate and spindle speed controls.

- **Feedrate slider**

The slider is used to adjust the feedrate.

There are two methods for adjusting the feedrate: *Indirect* and *Direct*. With the indirect method, you should select the desired feedrate by moving the feedrate slider, and then press **Apply**.

With the direct method, you just move the slider, and the feedrate is changed immediately, unless the selected port is configured not to insert feedrate information (*Send On Adjustment = Send No Data*), in which case, the feedrate is not changed until a new feedrate value is encountered in the input file.

By default, the indirect method is used. To enable direct mode, check the **Direct Mode** field and press **Apply**. If you select another port, leave the feed/speed tab, adjust the max/min values or press the emergency button, direct mode will be disabled.

- **Absolute**

When this field is checked, the feedrate is adjusted in *absolute* mode. When using absolute mode, the feedrate is adjusted independent of the feedrate specified in the transmitted file.

When moving the feedrate slider, the feedrate can be adjusted between the minimum and maximum values specified in the *Min* and *Max* fields.

If this field is not checked, the feedrate is adjusted in *relative* mode. In relative mode, the new feedrate is specified as a percentage value of the feedrate specified in the transmitted file.

Moving the slider in relative mode, will adjust the feedrate from 0% to 300% of the value specified in the input file, i.e. if the last value encountered in the transmitted file was 1200, the feedrate can be adjusted from 0 to 3600. The resulting value is also checked against the maximum and minimum values specified in the *Min* and *Max* fields. I.e. if the minimum value is 500 and the maximum value is 3000, the relative adjustment is limited to 500-3000.

If this field is disabled (grayed) it is because absolute adjustment is disabled for this port. For information on how to enable/disable absolute mode, please refer to the *Installation Guide*.

- **In**

The **In** field displays the current feedrate with no adjustment, this is the same as the last feedrate value found in the transmitted file.

If no feedrate value has been found, this field shows ???, and you can't use relative feedrate adjustment, since there is no value to base the relative change on. If you need to change the feedrate value while the **In** field shows ???, you have to use absolute adjustment.

- **Out**

The *Out* field displays the current feedrate, this is the same as the last feedrate value sent to the CNC.

If you are using *direct mode* this field shows the same value as the **New** field, unless the selected port is configured not to insert feedrate information (*Send On Adjustment = Send No Data*), in this case the **Out** field will not change its value to match the **New** field until a new feedrate value is encountered in the input file.

For further information about the *Send On Adjustment* setting, please refer to the *Installation Guide*.

If no feedrate value has been sent to the CNC, this field shows ???.

- **New**

The *New* field displays the result of the selected adjustment.

If the result is not available, this field shows ???.

- **Min**

This field shows the minimum allowed feedrate. To change the minimum allowed feedrate, change the value in the *Min* field and press **Apply**.

The minimum value must be between the minimum and maximum feedrate specified in the protocol configuration. For further information please refer to the *Installation Guide*.

- **Max**

This field shows the maximum allowed feedrate. To change the maximum allowed feedrate, change the value in the *Max* field and press **Apply**.

The maximum value must be between the minimum and maximum feedrate specified in the protocol configuration. For further information please refer to the *Installation Guide*.

- **Emergency button**

The emergency button is used to cancel any changes in feedrate adjustment.

If the selected port is configured not to insert feedrate information (*Send On Adjustment = Send No Data*), the current feedrate adjustment is not canceled until a new feedrate value is encountered in the input file.

For further information about the *Send On Adjustment* setting, please refer to the *Installation Guide*.

4.7 System log

To see the system log information select the **System log** tab. The system log contains general status information. In addition to this, all port errors are also logged on the system log (duplicates of the error information logged on the port log tab).

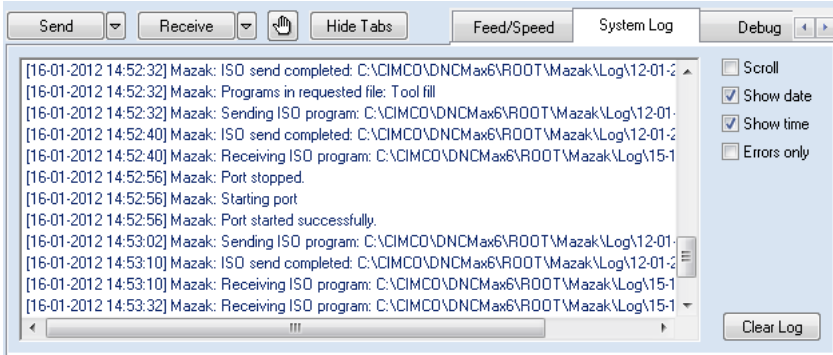


Figure 4.12: System log

If there are more than 1000 log entries since the server was started, only the last 1000 are shown.

There are two kinds of log entries: *Errors* and *Information*.

Error entries are logged after a failed operation, and are indicated with red text in the log. Information entries are logged after the completion of a successful operation, and are indicated with blue text.

- **Scroll**

The log will scroll so new entries are shown at the bottom of the list. Check this field if you want to see the latest log entries.

- **Show date**

The log displays the date of the logged event. This function can be toggled on and off. The date is always stored in the log.

- **Show time**

The log displays the time of the logged event. This function can be toggled on and off. The time is always stored in the log.

- **Errors only**

Check this field if only errors should be shown in the log. Both error and information entries are always stored in the log.

- **Clear log**

Clear the contents of the log. You can restart the administration client to bring back cleared log information, or check the log file.

4.8 Debugging

You should only use the debug tab, if you have been instructed to do so by the CIMCO support team. The information available in the debug tab is only useful for qualified support personnel.

Note: You can disable the debug tab from the setup menu, for further information, please refer to section 4.1.

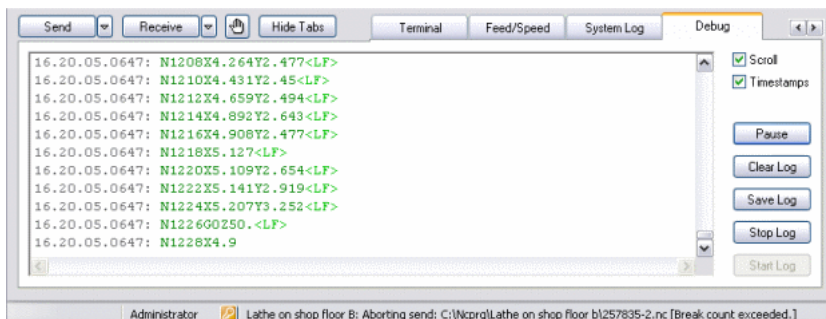


Figure 4.13: Transmission and protocol debugging

4.9 Controlling multiple servers

If your DNC-Max servers are licensed for remote administration, you can control multiple servers simultaneously from the same administrator client, over a TCP/IP network connection.

The DNC-Max Client will auto detect any server on your local network, and add all ports found to the port list. You can choose to limit the number of servers that should be controlled from the Client, by selecting **Setup / Select Servers** from the menu. This will bring up the server selection dialog shown below.

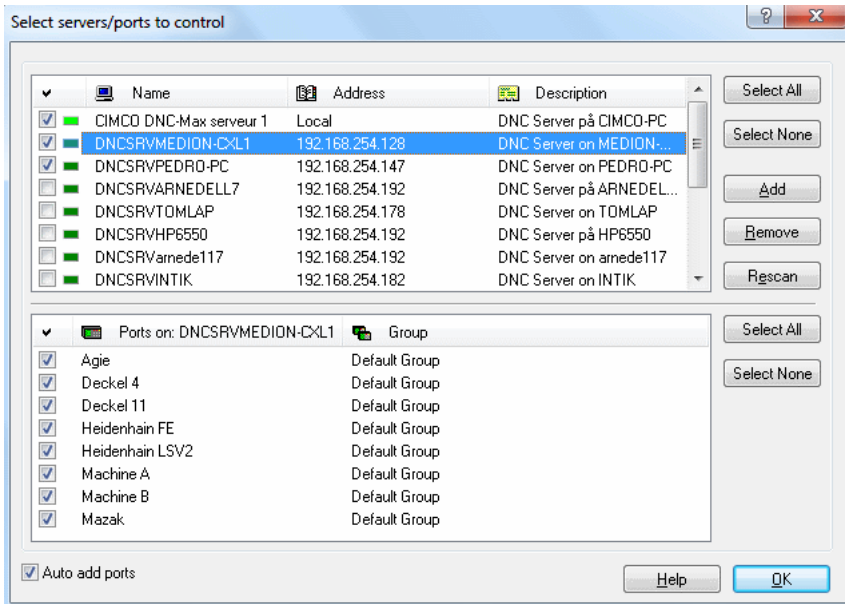


Figure 4.14: Select servers dialog

A check mark () in the left column indicates that the administration client controls the server. If the field is not checked (), the server is not controlled by the administration client. To toggle the check mark, click with the left mouse button inside the black square.

4.9.1 LED indicators

The indicator next to the checkbox, shows the current status of the server.

- Server is on-line (Light green).
- Server is stopped (Dark green).
- Server is no licensed for remote administration (Light yellow).

4.9.2 Buttons

- **Select All**

Click on this button to select all servers on your local network or all ports available on the selected server(s).

- **Select None**

Click this button to deselect all servers and ports.

- **Add**

If one or more servers are not shown in the list, press this button to add them manually (see below)

- **Remove**

Remove selected server from list.

- **Rescan**

Clear list, and add all currently active servers.

- **Help**

Show the on-line help page.

- **OK**

Accept selection.

4.9.3 Adding servers manually

If one or more servers are not located on the same TCP/IP sub-net as the administrator client, they cannot be auto detected. If this is the case, you must add these servers manually. To do this, click **Add**, and enter the TCP/IP of the DNC server in the dialog shown below.

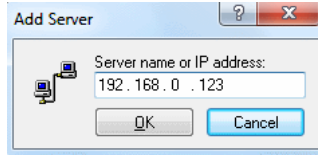


Figure 4.15: Add server manually

4.9.4 Disabling remote administration

To disable remote administration in one or more administration clients, you must edit the administration client configuration file manually.

The administration client configuration file is located in the installation directory `\CFG\DNCAdm.ini`.

Open the configuration file in a text editor like *CIMCO Edit* or *Notepad*, and locate the section `[USERCONFIG]` and change:

```
[USERCONFIG]
LOCALONLY = No
```

To

```
[USERCONFIG]
LOCALONLY = Yes
```


DNC-Max HOWTO

5.1 Add a new port

This section describes how to add new ports to the DNC server. You will need one port for every connected CNC. The port configuration determines how the server should communicate with the CNC. Adding a new port requires administrator access rights.

To add a new port select **Port/Add Port** from the administration client, and enter the administrator password (if required). If you are administrating more than one server, you will be prompted to select which server the new port should be added to. In this case, select the server you wish to add the new port to, and press **OK**. The select server dialog is shown below.

If you do not have more than one server, this dialog is not shown.

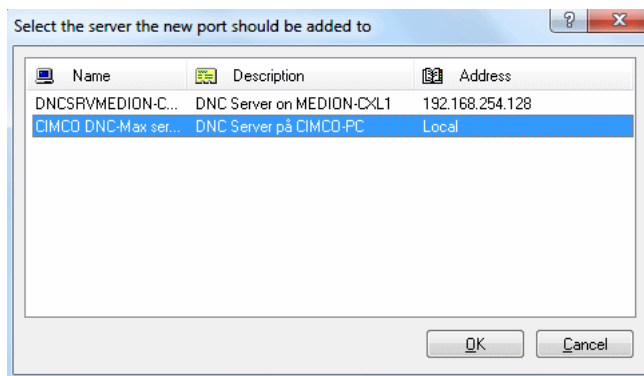


Figure 5.1: Select which server the new port should be added to

Enter a description (name) for the new machine in the **Machine Description** field. You should always use descriptions that uniquely identifies your machines, like the location of the CNC or the name of operator. Only letters, digits and spaces are allowed in the machine description. The description can be 1-128 characters long, but it is highly recommended that you choose a short description with 5-20 characters, this way, the description takes up less space in the port list, and in log files etc.

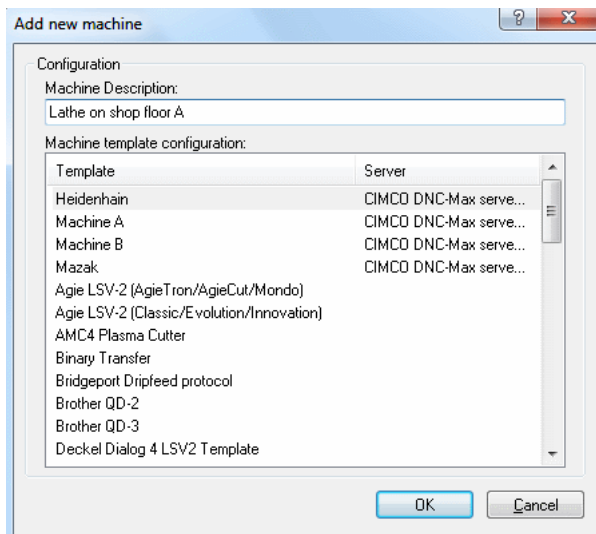


Figure 5.2: Add port

Then select a template configuration from the **Machine template configuration** drop list. The list of templates contains all the machines you have configured, and a list of default templates for different machine types. If you are going to *clone* one of your existing configurations, select the machine you wish to clone from the list, otherwise select the default template that matches your machine. The template also determines which protocol is used for the port, i.e. if you select *Heidenhain FE mode template*, the special Heidenhain protocol is used.

When you have entered a description and selected the correct template configuration, press **OK**. If the server is licensed for this port, the port configuration is shown next. If the server is not licensed, i.e. the number of ports is exceeded, or the selected protocol is not valid for this server, you will receive an error message.

Note: If you have a number of identical machines, start by completing the configuration for just one of them. When you have tested the configuration, and determined that it works correctly. Add new ports for the remaining machines, and use this configuration as template for the remaining configurations.

5.2 Rename a port

This section describes how to rename a port. Renaming ports requires administrator access rights.

From the administration client, highlight the port you wish to rename, by clicking in the port list. Select **Port/Rename Port** from the menu, and enter the administrator password (if required). This will bring up the rename dialog shown below. The current description is initially shown in the **New machine description** field. Change this to the new description and press **OK**. If you do not wish to change the description, press **Cancel**.

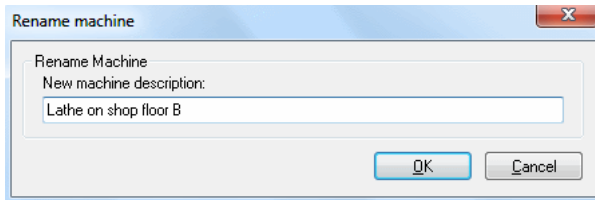


Figure 5.3: Rename port

The description must be 1-128 characters long, but it is highly recommended that you choose a short description with 5-20 characters, this way, the description takes up less space in the port list, and in log files etc.

5.3 Delete a port

This section describes how to delete a port. Deleting ports requires administrator access rights.

From the administration client, highlight the port you wish to delete, by clicking in the port list. Select **Port/Delete Port** from the menu, and enter the administrator password (if required). You will be prompted to confirm that you wish to delete the selected port.

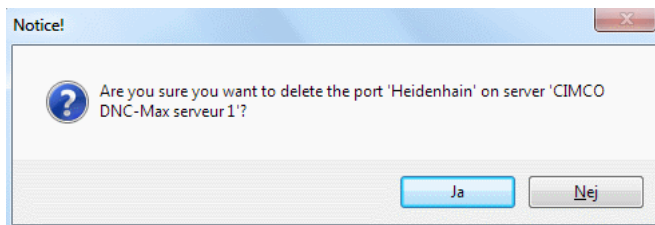


Figure 5.4: Delete port

Press **Yes** to delete the port. If you do not wish to delete the port, press **No**.

Note: If the selected port has a transmission in progress, the dialog prompting you to confirm the deletion, will indicate this.

5.4 Start and stop ports

This section describes how to start and stop a port. Starting/stopping a port requires administrator access rights.

When a port is stopped, you cannot send and or receive files with the port, and it will not respond to auto receive or remote request. The serial port is *released*, making it available for other ports or programs.

5.4.1 Stopping a port

To stop a specific port, highlight the port in the port list by clicking on the left mouse button, and select **Port/Stop Port** from the administrator menu.

If a transmission is in progress, the following dialog is shown:

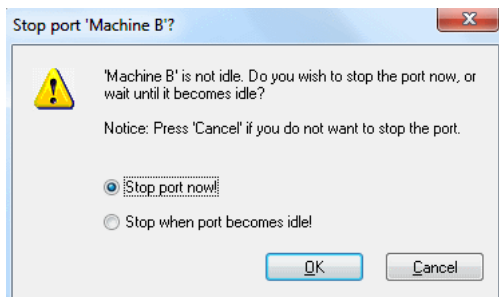


Figure 5.5: Stop port warning

From this dialog you can choose to stop the port immediately, or wait until it becomes idle. If you do not wish to stop the port, press **Cancel**.

When the port is stopped, the port status shows: *Stopped*, and the **Stop Port** menu item is disabled.

5.4.2 Starting a port

To start a *stopped* port, highlight the port in the port list by clicking on the left mouse button, and select **Port/Start Port** from the administrator menu.

When the port is started, the port status will change to *Idle*, and the **Start Port** menu item is disabled.

5.4.3 Restarting a port

To restart a port, highlight the port in the port list by clicking on the left mouse button, and select **Port/Restart Port** from the Client menu.

If a transmission is in progress, the stop port warning dialog shown above will be displayed.

When a port is restarted, it will first be stopped, then started. The port status might change briefly to *Stopped* before returning to *Idle*.

5.5 Enable/disable a port

This section describes how to enable or disable a port. Enabling/disabling a port requires administrator access rights.

When a port is disabled, you cannot send and or receive files with the port, and it will not respond to auto receive or remote request. The serial port is *released*, making it available for other ports or programs. Disabled port are not started automatically when the server is started.

To enable a disabled port, highlight the port in the port list by clicking on the left mouse button, and select **Port/Disable Port** from the Client menu.

You will be prompted to confirm the disable operation. If a transmission is in progress, the confirm dialog will indicate this.

When the port is disabled, the port status shows: *Disabled*, and all port related menu items are disabled.

5.5.1 Enabling a port

To enable a *disabled* port, highlight the port in the port list by clicking on the left mouse button, and select **Port/Enable Port** from the Client menu.

When the port is enabled, the port status will change to *Idle*.

Note: If the port is disabled because of a license or configuration problem, you cannot enable the port from **Port/Enable Port**. In this case, you must solve the license or configuration problem first.

5.6 Send a file

This section describes how to send files manually. A manual send operation is a file transfer from the DNC server to the CNC, initiated manually from the Client program, as opposed to an automatic transfer initiated by the CNC operator using the remote request feature. Manual transmissions requires user access.

To send a file manually from a specific port, highlight the port in the port list by clicking on the left mouse button, and select **Send/Receive / Send File** from the Client menu, or press **Send** on the Send/Receive tab.

Then select a file to send from the file dialog. If you are controlling a remote server, the drives and files listed in the file dialog are those visible to the server. I.e. you cannot send files located on the administration computer, unless the administration computer has one or more shared drives, that are accessible from the server. The reason for this is, that a file must be visible from the server, for the server to be able to transmit it.

Note: Not all protocols supports *Send File*.

5.7 Send a file with advanced options

This section describes how to send files manually, using the advanced send option.

To send a file manually from a specific port, highlight the port in the port list by clicking on the left mouse button, and select **Send/Receive / Send File Advanced** from the Client menu. This will bring up the *send advanced* dialog shown below.

Note: Not all protocols support *Send File Advanced*.

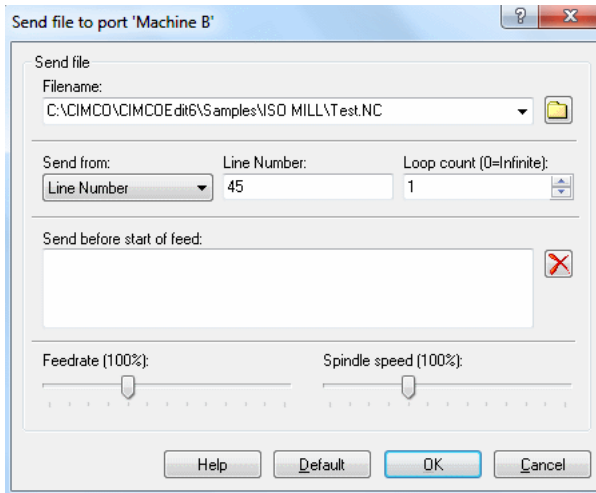


Figure 5.6: Send file advanced dialog

From the advanced dialog, select the file to send, by pressing the folder button, or select a previously transmitted file from the drop down box.

Then select the starting point in the file from the **Send From** drop down list.

- **Send from start of file**

When sending from start of file, you can send the file multiple times by specifying a *loop count* greater than 1.

- **Send from line number**

Enter the start line number in the **Line Number** field.

- **Send from block number**

Enter the start block number in the **Block Number** field.

If your machine uses block numbers in the format N1234, you do not have to specify N.

Note: If the selected block number is not found, no data will be send. Check the port log for further information.

- **Send from tool change**

Enter the start tool number in the **Tool Number** field.

If your machine uses tool numbers in the format T010101, you do not have to specify *T*, but you must specify 010101, specifying only 01 will not find the correct tool (if any).

Note: If the selected tool number is not found, no data will be send. Check the port log for further information.

If you wish to send some data before the start of the transmission, specify this in the **Send before start of feed** field. For further information on specifying start of feed data, please refer to section 5.12.

In addition to this you can specify an initial feedrate and or spindle speed, if the protocol used by the selected port supports this, and if the server is licensed for feed/speed operations.

To send the selected file with the specified options, press **OK**. If you do not wish to send a file, press **Cancel**. To apply default settings, press **Default**.

Note: If you re-send a file using the recent menu, any option specified in the advanced dialog, will be used for the re-send operation.

5.8 Receive a file

This section describes how to receive files manually. A manual received operation is a file transfer from the CNC to the DNC server, initiated manually from the Client program, as opposed to a automatic transfer initiated by the CNC operator using the auto receive feature. Manual transmissions requires user access.

To receive a file manually from a specific port, highlight the port in the port list by clicking on the left mouse button, and select **Send/Receive / Receive File** from the Client menu, or press **Receive** on the Send/Receive tab.

Then select a name for the file that should be received in the file dialog.

If you are controlling a remote server, the drives and files listed in the file dialog are those visible to the server. I.e. you cannot send files located on the administration computer, unless the administration computer has one or more shared drives that are accessible from the server. The reason for this is, that a file must be visible from the server, for the server to be able to transmit it.

Note: Not all protocols support *Receive File*.

5.9 Pause a transmission

This section describes how to pause a transmission. Pausing a transmission requires user access.

To pause a transmission on a specific port, highlight the port in the port list by clicking on the left mouse button, and select **Send/Receive / Pause** from the Client menu, or press **Pause** on the Send/Receive tab. Then select when you want to pause:

- **Pause Now**

Pause transmission immediately.

- **Pause At Line Number**

Use this option to pause at a specific line number. If the requested line number is already passed, the transmission is paused immediately.

The specified line will not be sent. I.e. if you specify *Pause at line 100*, only 99 lines will be sent.

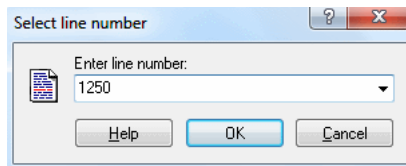


Figure 5.7: Select line number

- **Pause At Block Number**

Use this option to pause at a specific block number. If the requested block number is already passed, the transmission will continue.

If your machine uses block numbers in the format N1234, you do not have to specify N.

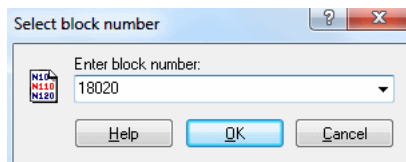


Figure 5.8: Select block number

- **Pause At Next Tool change**

Use this option to pause at the next tool change. The server will pause the transmission just before the next line containing a tool change.

If a M6 style tool load command is used for this port, the server will pause the transmission just before the next line containing the tool load command.

If the tool load command (M6) and the tool change command (T010101) is on the same line, the server will pause the transmission just before this line.

- **Pause At Tool change**

Use this option to pause at a specific tool number. If the requested tool number is already passed, the transmission will continue, and the server will try to locate the tool at a later point in the file.

The server will pause the transmission just before the line containing the selected tool.

If a M6 style tool load command is used for this port, the server will pause the transmission just before next line containing a tool load command, after the selected tool is found.

If the tool load command (M6) and the tool change command (T010101) is on the same line, the server will pause the transmission just before this line.

If your machine uses tool numbers in the format T010101, you do not have to specify *T*, but you must specify 010101, specifying only 01 will not find the correct tool (if any).

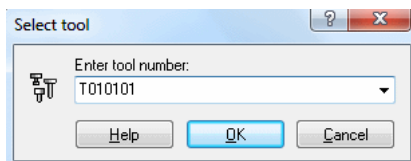


Figure 5.9: Select tool number

- **Pause At End Of Current Loop**

Pause the transmission at the end of current loop. If the transmission is not a looped operation, the request is ignored.

If any *Send at end of loop data* is specified in the standard protocol configuration, it will not be sent.

- **Clear Pause Request**

If you have requested a pause at: *Line Number*, *Block Number*, *Next Tool change*, *Tool change* or *End Of Loop*, and the specified pause point has not been reached yet, you can cancel the pause request.

In the *Pause At Line Number*, *Block Number*, or *Tool change* dialogs, you can press the *drop down* button, to recall previous values (as shown below).

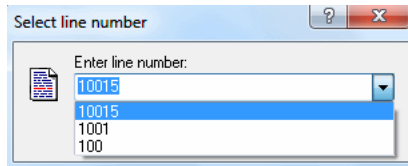


Figure 5.10: Select line number using recent values

Note: Not all protocols support *Pause Transmission*.

5.10 Restart a transmission

This section describes how to restart a transmission. Restarting a transmission requires user access.

Restart can only be used if the current transmission is paused.

For information on pausing transmissions, please refer to section 5.9.

- **Restart From Current Position**

Restart transmission from where the transmission was paused.

- **Restart From Beginning Of File**

Restart transmission from start of the file.

- **Restart From Line Number**

Use this option to restart from a specific line number. If the requested line number is greater than the number of lines in the file, an error is logged, and the port remains paused.

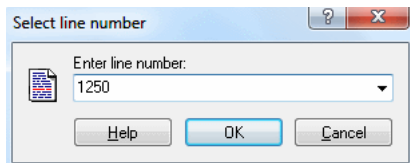


Figure 5.11: Select line number

- **Restart At Block Number**

Use this option to restart from a specific block number. If the requested block number is not found, an error is logged, and the port remains paused.

If your machine uses block numbers in the format N1234, you do not have to specify N.

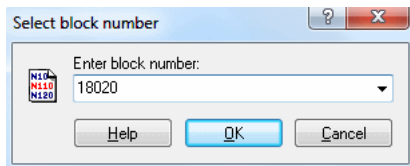


Figure 5.12: Select block number

- **Restart From Previous Tool change**

Use this option to restart from the previous tool change. The server will restart the transmission from the line containing the tool change, i.e. the first line transmitted will contain a tool change and or tool load command, depending on the port configuration.

If a M6 style tool load command is used for this port, the server will restart the transmission from the line containing the tool load command.

If the tool load command (M6) and the tool change command (T010101) are on the same line, the server will restart the transmission from that line.

- **Restart From Tool change**

Use this option to restart from a specific tool number. The server will scan for the requested tool number from the beginning of the file, if the tool is used multiple times, transmission will be restarted from the point where the tool is first used. If the requested tool number is not found, the port will remain paused.

The server will restart the transmission from the line containing the tool change, i.e. the first line transmitted will contain a tool change and or tool load command, depending on the port configuration.

If a M6 style tool load command is used for this port, the server will restart the transmission from the line containing the tool load command.

If the tool load command (M6) and the tool change command (T010101) are on the same line, the server will restart the transmission from that line.

If your machine uses tool numbers in the format T010101, you do not have to specify *T*, but you must specify 010101, specifying only 01 will not find the correct tool (if any).

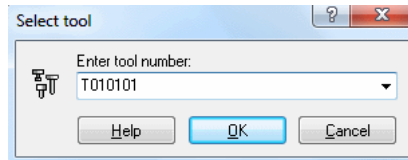


Figure 5.13: Select tool number

In the *Restart At Line Number*, *Block Number*, or *Tool change* dialogs, you can press the *drop down* button, to recall previous values (as shown below).

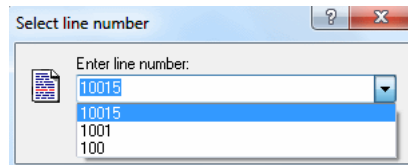


Figure 5.14: Select line number

Note: Not all protocols support *Restart Transmission*.

5.11 Stop a transmission

This section describes how to stop a transmission. Stopping a transmission requires user access.

To stop a transmission on a specific port, highlight the port in the port list by clicking on the left mouse button, and select **Send/Receive / Stop** from the Client menu, or press **Stop** on the Send / Receive tab. Then select when you want to stop.

- **Stop Now**

Stop the transmission immediately.

- **Stop At Line Number**

Use this option to stop at a specific line number. If the requested line number is already passed, the transmission is stopped immediately.

The specified line will not be sent. I.e. if you specify *Stop at line 100*, only 99 lines will be sent.

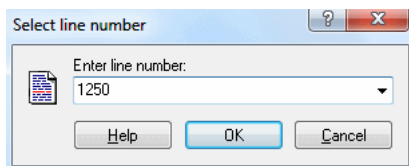


Figure 5.15: Select line number

- **Stop At Block Number**

Use this option to stop at a specific block number. If the requested block number is already passed, the transmission will continue.

If your machine uses block numbers in the format N1234, you do not have to specify N.

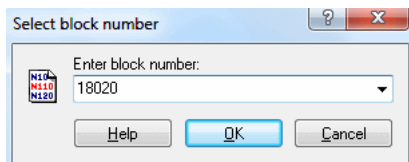


Figure 5.16: Select block number

- **Stop At Next Tool change**

Use this option to stop at the next tool change. The server will stop the transmission just before the next line containing a tool change.

If a M6 style tool load command is used for this port, the server will stop the transmission just before the next line containing the tool load command.

If the tool load command (M6) and the tool change command (T010101) is on the same line, the server will stop the transmission just before this line.

If your machine uses tool numbers in the format T010101, you do not have to specify *T*, but you must specify 010101, specifying only 01 will not find the correct tool (if any).

- **Stop At Tool change**

Use this option to stop at a specific tool number. If the requested tool number is already passed, the transmission will continue, and the server will try to locate the tool at a later point in the file.

The server will stop the transmission just before the line containing the selected tool.

If a M6 style tool load command is used for this port, the server will stop the transmission just before next line containing a tool load command, after the selected tool is found.

If the tool load command (M6) and the tool change command (T010101) is on the same line, the server will stop the transmission just before this line.

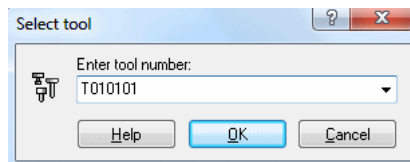


Figure 5.17: Select tool number

- **Stop At End Of Loop**

Stop the transmission at the end of current loop. If the transmission is not a looped operation, the request is ignored.

If any *Send at end of loop data* is specified in the standard protocol configuration, it will not be sent.

- **Clear Stop Request**

If you have requested a stop at: *Line Number*, *Block Number*, *Next Tool change*, *Tool change* or *End Of Loop*, and the specified stop point has not been reached yet, you can cancel the stop request.

In the *Stop At Line Number*, *Block Number*, or *Tool change* dialogs, you can press the *drop down* button, to recall previous values (as shown below).

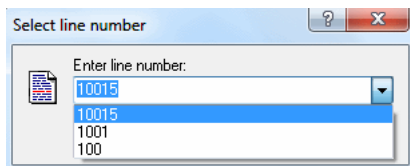


Figure 5.18: Select line number

Note: Not all protocols support *Stop Transmission*.

5.12 Specify feed data and non-printable characters

This section describes how to specify feed data and non-printable characters in DNC-Max.

Feed data is the term used for any information sent or received by DNC-Max that is not part of the actual file being transmitted.

The following is an example from the standard protocol configuration, where the CNC requires a '%' character followed by a ASCII 0 to signal end of transmission.

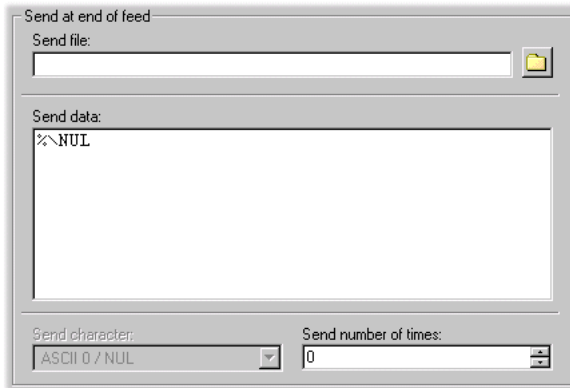


Figure 5.19: Send at end of feed

This also demonstrates how to specify non-printable characters, using the standard ASCII name NUL preceded by a '%'.

You can also enter `\0` to specify ASCII 0. But notice that the next time you open the configuration dialog, this has been converted into `\NUL`.

The ASCII names for all non-printable characters (ASCII 0 - ASCII 31 and ASCII 127) are listed in section 5.12.3.

If you need to specify a non-printable character followed by one or more regular ASCII characters, you must insert a space after the ASCII name. Ex. `\EOT stop`, the space character will not be sent. To send a space after a ASCII name, you must enter two spaces.

Note: Pay attention when you enter data in multi line input fields like **Send data** above. If you press enter, the cursor will move to the next line, and

server will send the specified data, followed by a newline (see below for further information)

An alternative solution to specifying %\NUL is shown below, in this case only '%' is specified in the **Send data** field, and the ASCII 0 character is instead send using the **Send character** field.

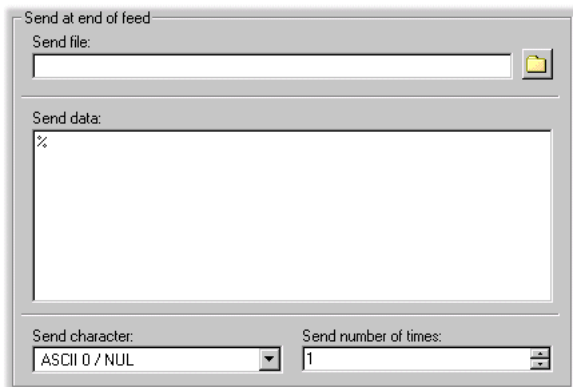


Figure 5.20: Alternate solution to end of feed problem

5.12.1 Specifying multiple lines

In all multi line input fields you can enter more than one line. The following is an example from the standard protocol configuration, where the CNC requires a line containing M30, followed by a line containing '%'.

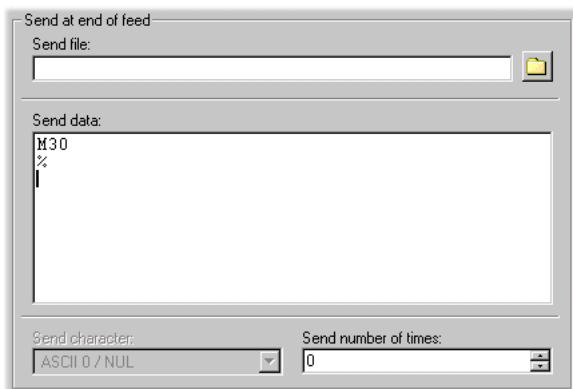


Figure 5.21: Send multiple line at end of feed

Notice that the cursor is at the beginning of the next line following the line containing '%'. This happens if *Enter* was pressed at the end of the '%' line. After each line, the server will send the newline character(s) specified for the port. The result is shown in the terminal window below.

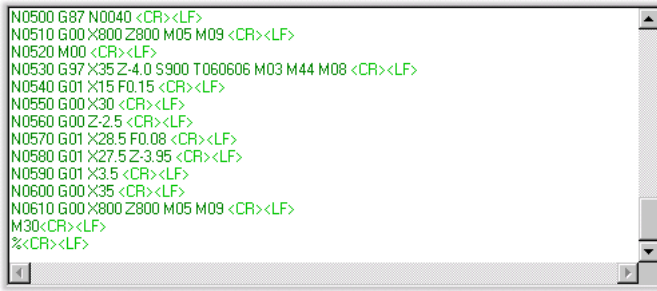


Figure 5.22: Result of sending feed data with linefeed

If you do not want to send newline characters after the last line, make sure that you did not press enter, at the end of the last line.

To verify that no extra newlines have been entered, click with the mouse in the input field, below the last line you entered. If the cursor moves to the beginning of the next line, this indicates that you pressed *Enter*, if you do not want a newline character, press *Backspace* to delete it.

The result of sending the two lines, where no newline is sent at the end of the second line is shown in the terminal window below.

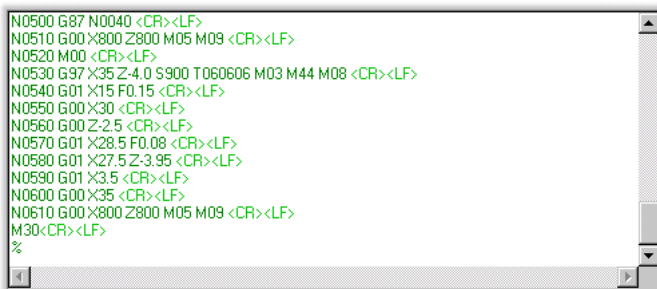


Figure 5.23: Result of sending feed data with no linefeed

5.12.2 Specifying environment variables

You can also specify environment variables in feed data. The example below is from the standard protocol, and it demonstrates how to ensure that the

correct feedrate, spindle speed and tool number is used when you restart transmission from any point.

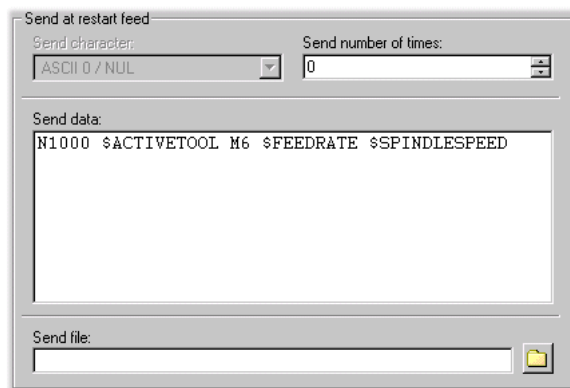


Figure 5.24: Using environment variables in feed data

For further information about environment variables, please refer to the *Installation Guide*.

5.12.3 ASCII Table

<i>Decimal</i>	<i>Hex</i>	<i>Name</i>
0	00	NUL
1	01	SOH
2	02	STX
3	03	ETX
4	04	EOT
5	05	ENQ
6	06	ACK
7	07	BEL
8	08	BS
9	09	HT
10	0A	LF
11	0B	VT
12	0C	FF
13	0D	CR
14	0E	SO
15	0F	SI
16	10	DLE
17	11	DC1
18	12	DC2
19	13	DC3
20	14	DC4
21	15	NAK
22	16	SYN
23	17	ETB
24	18	CAN
25	19	EM
26	1A	SUB
27	1B	ESC
28	1C	FS
29	1D	GS
30	1E	RS
31	1F	US
32	20	SP
127	7F	DEL

Table 5.1: ASCII Table: ASCII 0 to ASCII 32

<i>Decimal</i>	<i>Name</i>	<i>Decimal</i>	<i>Name</i>	<i>Decimal</i>	<i>Name</i>
33	!	65	A	97	a
34	"	66	B	98	b
35	#	67	C	99	c
36	\$	68	D	100	d
37	%	69	E	101	e
38	&	70	F	102	f
39	'	71	G	103	g
40	(72	H	104	h
41)	73	I	105	i
42	*	74	J	106	j
43	+	75	K	107	k
44	,	76	L	108	l
45	-	77	M	109	m
46	.	78	N	110	n
47	/	79	O	111	o
48	0	80	P	112	p
49	1	81	Q	113	q
50	2	82	R	114	r
51	3	83	T	115	s
52	4	84	S	116	t
53	5	85	U	117	u
54	6	86	V	118	v
55	7	87	W	119	w
56	8	88	X	120	x
57	9	89	Y	121	y
58	:	90	Z	122	z
59	;	91	[123	{
60	<	92	\	124	
61	=	93]	125	}
62	>	94	^	126	~
63	?	95	—	127	DEL

Table 5.2: ASCII Table: ASCII 33 to ASCII 127

Access control

This sections describes how to configure and use access control. Access control enables you to limit the number of persons that can configure and/or control you DNC servers. There are two levels of access control: *Administrator* and *User*.

To enable access control, you must specify a user and/or administrator password in the server configuration. For more information, please refer to the *Installation Guide*.

If you have multiple servers, and you have enabled access control, you should specify the same password on all servers. This is not a requirement, but it makes it a lot easier to administrate and control your DNC servers.

6.1 Access control in the server

When the server is *locked*, the only allowed operations are *Start Client*, *Show Help* and *About*.

To lock the server, press the **Lock** button. The **Lock** button then changes to **Unlock** to indicate that the server is locked.

Note: If you loose your administrator password, you will not be able to control the DNC server, and you must contact CIMCO support for information on how to reset the administrator password.

If you have enabled access control, you should also check the *Lock console on startup* option in the server configuration.

To unlock the server, press the **Unlock** button. Then select *Administrator* or *User* from the logon dialog shown below.

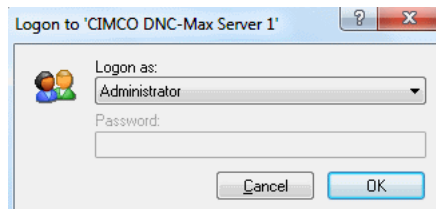


Figure 6.1: Logon dialog

If access control is enabled for the selected user, you must specify the correct password in the password field. If access control is not enabled for the selected user, the password field is grayed, and you can just press **OK** to login.

When you are logged on as *User* it is possible to toggle the **Log Show Time**, **Log Show Date** and **Log Shows Errors Only** options in the setup menu, and start the administrator client. All other menus and buttons are disabled (grayed).

If you log in as administrator, all operations are allowed.

For further information about the server console menus, please refer to section 3.1.

Note: Even if access control is not enabled, it is possible to lock the server. This prevents that anyone inadvertently stops the server, or change any configuration options. To unlock the server when no access control is enabled, you do not have to specify a password in the login dialog.

6.2 Access control in the administrator client

If you start the administrator client by pressing the **Client** button in the server console, you will be logged on to the server with the same permissions as you have in the server console. I.e. if you are logged on at the server console as *User*, you will be logged on as user in the administrator client as well.

If you start the administrator client from the start menu, or desktop icon, you are not logged on when the client is started.

The menus and buttons are not grayed in the Client if you are not logged on. Instead the Client checks if the requested operation is permitted by the user currently logged on. If not, it prompts for the password required to perform the selected operation. I.e. if you are logged on as user and selects **Configure Port**, you will be prompted for the administrator password. If you enter the correct password, you are now logged in, and any subsequent operations can be performed without entering a password.

If you are logged on, and leave the computer, you can press the **Lock** button to log off all servers. If you are not currently logged on to any servers, the **Lock** button is grayed.

If you are controlling multiple server from the same administrator client, and all servers are configured to use the same password, you will just have to specify the password the first time you attempt to perform a restricted operation.

If you are controlling multiple servers from the same administrator client, and some servers are configured with different passwords, you will have to specify the password the first time you attempt to perform a restricted operation on each of the servers.

For a complete list of operations that requires user or administrator access, please refer to section 6.4 and section 6.3.

Note: Operations that are not linked to a specific port or server, like changing terminal colors, are allowed even if you are not logged on.

Example:

Suppose you have 4 servers (DNCSRV1 - DNCSRv6):

- DNCSRV1
Administrator password = ADMIN, and user password = USER.
- DNCSRV2
Administrator password = ADMIN, and user password = USER.
- DNCSRV3
Administrator password = ADMIN3, and no user password.
- DNCSRv6
Administrator password = ADMIN4, and user password = USER4.

You have started the administration client from the console of DNCSRV2, where you are logged on as *User*.

You can then send/receive files and perform other user operations on servers 1-3 without entering a password, because you are already logged on with user password **USER** on server 2, and you can also control ports on server 1 and 3, because they either use the same user password, or have no user password (access control disabled for *User*).

If you try to send or receive a file on one of the ports located on server 4, you will be prompted for the user password (**USER4**).

If you try to configure a port, or perform some other action that requires administrator access, you will have to specify the correct administrator password for the server where the port is located.

If you are logged on as administrator on server 1, you will also be able to perform administrator task on server 2, since they use the same administrator password. But you must specify the correct password if you attempt to perform administrator task on either server 3 or 4.

6.3 Administrator access

This sections contains a list of operations that requires administrator access. For information on how to enable administrator access control, please refer to the *Installation Guide*.

- Adding ports
- Removing ports
- Renaming ports
- Changing port configurations
- Stopping/Starting ports
- Enabling/disabling ports
- Start/stop server.
- Changing server configuration.
 - Set server name
 - Set server description
 - Change user/administrator passwords
 - Change server directories
 - Change log modes

6.4 User access

This sections contains a list of operations that requires user access. For information on how to enable user access control, please refer to the *Installation Guide*.

- Initiate manual file reception.
- Initiate manual file transmission.
- Pausing/restarting/stopping transmissions.
- Changing feedrate and spindle speed.

Note: Anyone with administrator access also has user access.

Serial communication overview

This section contains information about how to build a standard serial cable, and loopback device.

7.1 RS-232 / RS-422 / RS-485

7.1.1 RS-232

Quite possibly the most widely used communication standard is RS-232. This implementation has been defined and revised several times and is often referred to as RS-232 or EIA/TIA 232. The IBM PC computer defined the RS-232 port on a 9-pin D sub connector and subsequently the EIA/TIA approved this implementation as the EIA/TIA 574 standard. This standard is defined as the 9 Position Non-Synchronous Interface between Data Terminal Equipment and Data Circuit-Terminating Equipment Employing Serial Binary Data Interchange. Both implementations are in wide spread use and will be referred to as RS-232 in this document. RS-232 is capable of operating at data rates up to 20 Kbps at distances less than 50 ft. The absolute maximum data rate may vary due to line conditions and cable lengths. RS-232 often operates at 38.4 Kbps over very short distances. The voltage levels defined by RS-232 range from -12 to +12 volts. RS-232 is a single ended or unbalanced interface, meaning that a single electrical signal is compared to a common signal (ground) to determine binary logic states. A voltage of +12 volts (usually +3 to +10 volts) represents a binary 0 (space) and -12 volts (-3 to -10 volts) denotes a binary 1 (mark). The RS-232 and the EIA/TIA-574 specification defines two type of interface circuits, Data Terminal Equipment (DTE) and Data Circuit-Terminating Equipment (DCE).

7.1.2 RS-422

The RS-422 specification defines the electrical characteristics of balanced voltage digital interface circuits. RS-422 is a differential interface that defines voltage levels and driver/receiver electrical specifications. On a differential

interface, logic levels are defined by the difference in voltage between a pair of outputs or inputs. In contrast, a single ended interface, for example RS-232, defines the logic levels as the difference in voltage between a single signal and a common ground connection. Differential interfaces are typically more immune to noise or voltage spikes that may occur on the communication lines. Differential interfaces also have greater drive capabilities that allow for longer cable lengths. RS-422 is rated up to 10 Megabits per second and can have cabling 4000 feet long. RS-422 also defines driver and receiver electrical characteristics that will allow 1 driver and up to 32 receivers on the line at once. RS-422 signal levels range from 0 to +5 volts. RS-422 does not define a physical connector.

7.1.3 RS-485

RS-485 is backwardly compatible with RS-422; however, it is optimized for party line or multi drop applications. The output of the RS-422/485 driver is capable of being Active (enabled) or Tri State (disabled). This capability allows multiple ports to be connected in a multi drop bus and selectively polled. RS-485 allows cable lengths up to 4000 feet and data rates up to 10 Megabits per second. The signal levels for RS-485 are the same as those defined by RS-422. RS-485 has electrical characteristics that allow for 32 drivers and 32 receivers to be connected to one line. This interface is ideal for multi drop or network environments. RS-485 tri state driver (not dual state) will allow the electrical presence of the driver to be removed from the line. Only one driver may be active at a time and the other driver(s) must be tri stated. The output modem control signal RTS controls the state of the driver. Some communication software packages refer to RS-485 as RTS enable or RTS block mode transfer. RS-485 can be cabled in two ways, two wire and four wire mode. Two wire mode does not allow for full duplex communication, and requires that data be transferred in only one direction at a time. For half duplex operation, the two transmit pins should be connected to the two receive pins (Tx+ to Rx+ and Tx to Rx). Four-wire mode allows full duplex data transfers. RS-485 does not define a connector pin out or a set of modem control signals. RS-485 does not define a physical connector.

7.2 RS-232 layout for 9 pin connector

<i>Pin</i>	<i>Signal</i>	<i>Name</i>
2	Received Data	RX
3	Transmitted Data	TX
4	Data Terminal Ready	DTR
5	Signal Ground	GND
6	Data Set Ready	DSR
7	Request To Send	RTS
8	Clear To Send	CTS

Table 7.1: 9 pin RS-232

Note: Only signals used for regular RS-232 communication are shown.

7.3 RS-232 layout for 25 pin connector

<i>Pin</i>	<i>Signal</i>	<i>Name</i>
3	Received Data	RX
2	Transmitted Data	TX
20	Data Terminal Ready	DTR
7	Signal Ground	GND
6	Data Set Ready	DSR
4	Request To Send	RTS
5	Clear To Send	CTS

Table 7.2: 25 pin RS-232

Note: Only signals used for regular RS-232 communication are shown.

7.4 Standard RS-232 serial cable.

To build a standard RS-232 serial cable, you will need two 9 or 25 pin female connectors, and a cable with 7 wires, preferably shielded cable.

<i>Connector A</i>	<i>Connector B</i>
RX	TX
TX	RX
DTR	DSR
DSR	DTR
RTS	CTS
CTS	RTS
GND	GND

Table 7.3: Standard RS-232 serial cable

If the cable is shielded, you should use the shield as ground (*GND*).

7.5 How to build a loopback device

A loopback is a device that sends the signal back through the same port as it is sent out of. It is used for testing purposes and is not used under normal operations.

To make a loopback device, you will need a 9-pin or 25-pin male connector, and three pieces of wire.

7.5.1 Loopback device for a 9-pin connector

- **RX/TX**

Connect pin 2 (RX) to pin 3 (TX).

- **DTR/DSR**

Connect pin 4 (DTR) to pin 6 (DSR).

- **RTS/CTS**

Connect pin 7 (RTS) to pin 8 (CTS).

7.5.2 Loopback device for a 25-pin connector

- **RX/TX**

Connect pin 3 (RX) to pin 2 (TX).

- **DTR/DSR**

Connect pin 20 (DTR) to pin 6 (DSR).

- **RTS/CTS**

Connect pin 4 (RTS) to pin 5 (CTS).

Using on-line help

This section describes how to use the on-line help system in CIMCO products.

8.1 Using help in dialogs

To get help for a particular dialog item, click at the ? at the top of a dialog box, as shown below.



Figure 8.1: Click the question mark

This will change the cursor to an arrow and a question mark indicating that you are in *Help Mode*. The new pointer is shown below.

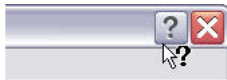


Figure 8.2: The question cursor

Now click on the item that you want further information about. If help is available for the selected item, a small window will popup displaying the help text. If no help is available the general on-line help is launched. An example of a popup help is shown below.

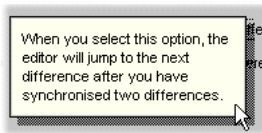


Figure 8.3: The popup information

You can also display the popup help by pressing **F1**.

8.2 Printing help information

If you wish to print just a single section of this on-line help, press the **Print** in the toolbar (shown below).

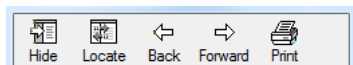


Figure 8.4: Help buttons

If you wish to print more than a few sections, you should open the *PDF* version of the on-line documentation. The *PDF* produces a much nicer printout.

The *PDF* version is located in the DNC-Max Help directory.

Note: You will need Adobe acrobat reader to open the *PDF* file.

Index

About DNC-Max, 19
Add, 18

Backup Configuration, 12
Backup Server Configuration, 19
Bytes Received, 21
Bytes sent, 21

Clear Log, 12
Clear log, 31, 36
Clear Pause Request, 51
Clear Queue, 23, 29
Clear queue, 17
Clear Stop Request, 56
Client menus, 16
Configure, 18
Configure Client, 19
Configure Server, 12, 19
Contents, 19
CPS/LPS, 21
CTS, 20
Current line, 21
Current receive directory, 26
Current transmit directory, 26

Delete, 18
Different receive directory, 25
Disable, 18
Disk mode, 28
DSR, 20
DTR, 20

Elapsed Time, 21
Enable, 18
Error, 20

Errors, 21
Errors only, 31, 36

File name, 21

Handheld Terminals, 18

Lines Received, 21
Log On/Log Off, 19
Log Show Date, 12
Log Show Time, 12
Log Shows Errors Only, 12

Machine Monitors, 18
Manual or Remote Request mode,
27

New receive directory, 26
New transmit directory, 26

Pause, 23
Pause At Block Number, 49
Pause At End Of Current Loop, 50
Pause At Line Number, 49
Pause At Next Tool change, 50
Pause At Tool change, 50
Pause Now, 49
Pause Transmission, 17
Port list, 16
Print File, 18
Program name, 21

Receive, 23, 29
Receive directory, 26
Receive File, 17

- Receive Recent File, 17
- Rename, 18
- Restart, 18, 24
- Restart At Block Number, 52
- Restart From Beginning Of File, 51
- Restart From Current Position, 51
- Restart From Line Number, 52
- Restart From Previous Tool change, 52
- Restart From Tool change, 53
- Restart Server, 19
- Restart Transmission, 17
- Restore Configuration, 12
- Restore Server Configuration, 19
- RTS, 20
- RX, 20

- Scroll, 30, 31, 35
- Select Servers, 19
- Send, 23, 28
- Send File, 17
- Send File Advanced, 17
- Send from block number, 47
- Send from line number, 47
- Send from start of file, 47
- Send from tool change, 47
- Send Recent Files, 17
- Show CR/LF, 31
- Show date, 30, 35
- Show time, 30, 35
- Specify receive directory, 25
- Specify transmit directory, 25
- Start, 18
- Status, 22
- Stop, 18, 24, 29
- Stop At Block Number, 54
- Stop At End Of Loop, 55
- Stop At Line Number, 54
- Stop At Next Tool change, 55
- Stop At Tool change, 55
- Stop Now, 54
- Stop Transmission, 17

- Tab sheets, 16
- Time Remaining, 21
- Transmission queue, 24, 29
- Transmit directory, 26
- TX, 20

- View last file transferred, 18

- XOff, 20